

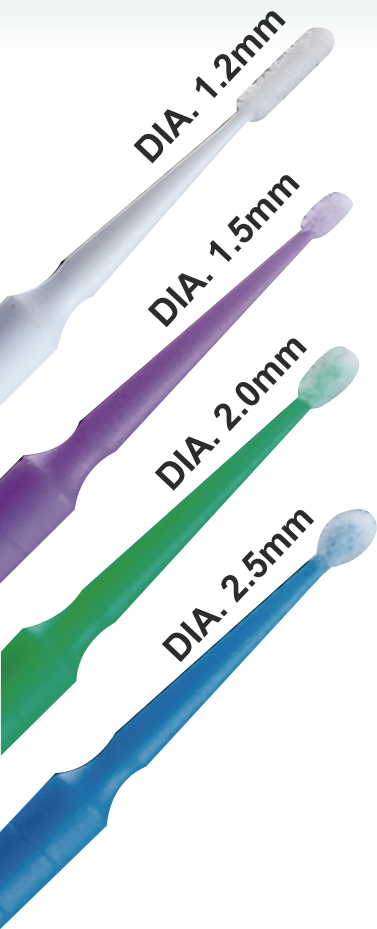
BobcareTM

WWW.BOBCAREHK.COM

SINCE 2010

2017
-2018

MICRO APPLICATORS



MICRO APPLICATORS			PACKING	400 pcs/pack
ITEM NO.	M01	M02	M03	M04
COLOR	●	●	●	○
SIZE	2.5mm	2.0mm	1.5mm	1.2mm
REMARKS	Regular	Fine	Ultrafine	Cylinder
INTRODUCTION	<ul style="list-style-type: none"> • Economical and disposable, saving up to 80% by the reduction of excess materials used • Bends into any angle for the placement of small controlled amounts of material in limited access areas 			

PROPHY ANGLE BRUSHES

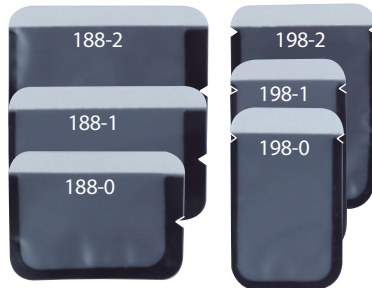
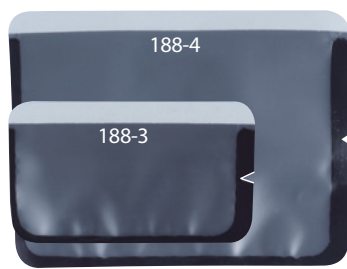
- Fits all standard straight handpieces
- Inclined angle 105° degree
- Ultimate smoothness with unique gearing
- Guaranteed no dislodging of cup



PROPHY ANGLES

- Ultimate smoothness with unique gearing
- Guaranteed no dislodging of cup
- Fits all standard straight handpieces
- Inclined angle 105° degree





- Quick tear-off opening
- Fits most phosphor plates
- Fully disposable envelopes
- Soft vinyl with rounded corners



188-0 No. 0 (I.D. 38mm x 24mm)
 188-1 No. 1 (I.D. 44mm x 28mm)
 188-2 No. 2 (I.D. 44mm x 33mm)
 188-3 No. 3 (I.D. 58mm x 28mm)
 188-4 No. 4 (I.D. 82mm x 58mm)

198-0 No. 0 (I.D. 24mm x 38mm)
 198-1 No. 1 (I.D. 24mm x 44mm)
 198-2 No. 2 (I.D. 33mm x 44mm)

X-RAY SENSOR SLEEVES



- Made from very supple poly plastic for greater tactile feel
- Easy to apply

140XS, X-Small 38mm x 200mm
 140S, Small 42mm x 200mm
 140M, Medium 45mm x 200mm
 140L, Large 60mm x 200mm



SYRINGE/HVE SLEEVES



Item No. 100

- Pre-cut opening for easier application
- Ideal for 3-way syringes, saliva ejectors and HVE valve etc
- Sizes: 26cm x 6.5cm



SUCTION TUBE SLEEVES



Item No. 135

- Pre-cut opening for easier application
- Made from very supple poly plastic for greater tactile feel
- Size: 35cm x 6.5cm



PEEL-N-STICK LIGHT GUIDE SLEEVES



Item No. 128-9

- Soft, pliable polypropylene Sleeve
- Easy to apply
- Economical
- Size:
 - 128 Small (7-8mm)
 - 129 Large (9-11mm)



INTRAORAL CAMERA SLEEVES



Item No. 125

- Made from very supple poly plastic for greater tactile feel
- Easy to apply
- Size: 24cm x 5cm



PEN TYPE CURING LIGHT SLEEVES



Item No. 123

- Made from very supple poly plastic for greater tactile feel
- Easy to apply



HANDPIECE AND PEN SLEEVES



Item No. 104

- Disposable sleeves for most handpieces, jet polishers and ultrasonic scalers
- Made from soft pliable poly plastic for greater tactile feel
- Easy to apply



CHAIR SLEEVES



111 Full Chair 200cm x 72cm
112 Half Chair 84cm x 94cm

- Eliminates the need for separate headrest covers
- Avoids the need for harmful disinfectants and aerosols prolonging the life of dental units and stools

T-STYLE LIGHT HANDLE SLEEVES



- Universal sizing to fit most T-style handles
- Full handle coverage
- Disposable yet economical
- Soft, pliable polypropylene sleeve holds position until removed
- Easy application and removal



SCREW-IN



251W



251G



252W



252G

METAL SHANKS

- Latex free
- Premium quality
- Ribbed and webbed
- Available in REGULAR(white), SOFT(green)



DISPOSABLE PROPHY BRUSHES



262F



262T



265M



268N



268B

METAL SHANKS



261F



261T

SCREW-IN

- Used for stain removal and polishing
- Available in NYLON(white), BRISTLE(light brown)



MIXING WELLS



18-906



18-907

- Fully disposable
- Sturdy design



PROPHY RINGS

Item No. 010

- Fully disposable to save time and prevent cross-contamination
- For prophy, endo etc.
- Colours: Blue, White, Green, Yellow, Lavender

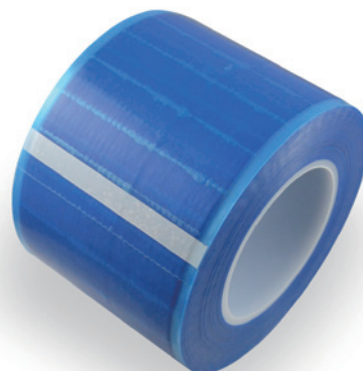
DAPPEN DISHES



Item No. 004

- Fully disposable to save time and prevent cross-contamination
- For prophy, etchant and bonding etc.
- Colours: Blue, White, Green

SUCTION TUBE ADAPTORS



Item No. 8008

- With 5mm non-adhesive edge for simple placement and removal
- Residue free
- 1200 sheets/roll
- Size: 10cm x 15cm



Item No. 818

- Directly interchangeable with most
- American style metal air/water syringe tips
- No sharp edges for patient comfort
- Unique quad air core design to ensure dry air
- Opaque Colour Tips/White Cores

DENTAL BIBS

NAPKIN HOLDERS



Item No. 220

- Economical and disposable, saving up to 80% by the reduction of excess materials used
- Bends into any angle for the placement of small controlled amounts of material in limited access areas

Item No. 090
(L47cm)



- Medical grade silicone
- Fully autoclavable up to 135°C
- Stainless steel alligator clips
- Non-slip design
- Bright, attractive colours

3-IN-1 TRAYS



18-N401
Posterior



18-N402
Quadrant



18-N403
Sideless



18-N404
Anterior



18-N405
Full Arch

- Wide occlusal plane
- Strong and tough plastic

- Specially designed walls for extra retention
- Tear resistant quality mesh

- Colour: Blue

PLASTIC WEDGES



7650S (11mm)



7650M (13mm)



7650L (15mm)



7650X (17mm)

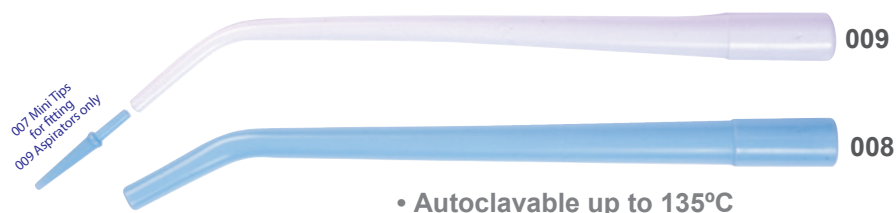
- Anatomically designed
- Soft tough plastic



Item No. 301

- Vented and non-vented combination
Soft rigid tubing, allows for greater patient comfort yet is strong enough for cheek retraction
- Thoroughly polished surface for smooth and quiet operation
- Fits standard **11mm** suction holders

AUTOCLAVABLE SURGICAL ASPIRATORS



• Autoclavable up to 135°C

007 Surgical Tip Mini

008 Surgical Tips **Large Orifice** Non-Vented

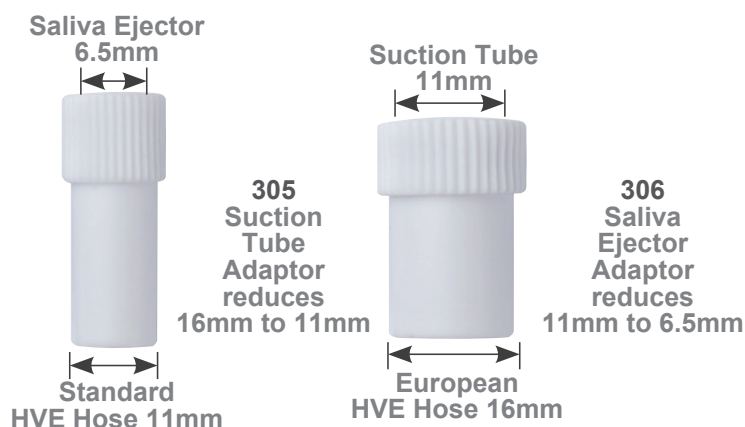
009 Surgical Tips **Standard** Non-Vented

AUTOCLAVABLE HVE SUCTION TUBES 16MM



- Fits European style **16 mm** suction tubing
- Autoclavable up to 135°C
- Special high quality plastic, sturdy enough for cheek retraction
- Fully polished internal surface and edge for quiet operation and patient comfort
- Assortment of bright, lively colours

SUCTION TUBE ADAPTORS



NAPKIN HOLDERS



Item No. 078

- Made of polypropylene plastic
- Full 12 mls capacity
- Self sealing medical grade plunger
- Designed for perio irrigation, impression materials, post surgical home use, fluoride treatments etc



600 Retainer Box
W80mm x D62mm x H28mm



601 Mouth Guard Box
W80mm x D62mm x H42mm



602 All Guard Box
W80mm x D80mm x H42mm



603 Denture Bath
W88mm x D68mm x H48mm

Colours: **Blue**, **Lavender**, **Green**

FLOWABLE COMPOSITE AND ETCHING GEL TIPS



080 Flow-Tip



081 Etch-Tip

- Universal Luer-lock design
- Bendable

- Sizes: 080 G.20(0.9mm)
- 081 G.23(0.6mm)

DYNAMIC MIXING TIPS



Item No. 055

- Fits Pentamix®¹ type mixing machine
- Economically priced

¹Pentamix is a registered trademark of 3M or 3M ESPE AG.

INTRAORAL SYRINGE TIPS



Intraoral Tips

- 085 Yellow for Yellow mixing tips
- 086 Clear for Green or Pink mixing tips
- 016H Clear for Brown mixing tips
- 018H Clear for Brown mixing tips

ENDO RULER ALUMINIUM

Item No. 4898

- For both hand and engine instruments
- Gauges from 1 to 30mm for right or left hand



ENDO MEASURING BLOCK

Item No. 4888

- Easy to use
- Accurate settings
- Durable construction
- Fully autoclavable up to 135°C
- Size: L100mm x D24mm x H32mm



ENDO STAND

Item No. 4833 (dia. 45 mm)
Item No. 812 Endo Sponges

- Fully autoclavable plastic stand with disposable sponge insert
- Cleans and holds endo instruments
- Silicone ring base resists sliding
- Fully autoclavable up to 135°C



TRIANGULAR ENDO RING AND CUSHIONS



- Fully disposable cushions
- Colour: Blue
- Autoclavable up to 135°C

088 Autoclavable Cushion Holders
803 Disposable Cushions

BOBCARE HONG KONG LIMITED

ADD: UNIT 04, 7/F, BRIGHT WAY TOWER,
NO.33 MONG KOK ROAD,
KOWLOON, HK.

TEL: 00852-27935511

FAX: 00852-35902333

E-MAIL: MAILBOX@BOBCAREHK.COM

HTTP://WWW.BOBCAREHK.COM

BOBCARE CHINA OFFICE

ADD: NO. 305, YUAN SHAN PUI ROAD,
DONGGUAN CITY, GUANGDONG PROVINCE,
CHINA.

TEL: 0769-83396197

FAX: 0769-83396197